

Grantmakers AI Modules

Presentation 2024

The Grantmakers AI tools were created to support and accelerate the deployment of the EPA's \$600 Million Environmental Justice Thriving Communities Grantmaking Program



Visit Our Website

environmentalprotectionnetwork.org



Environmental Protection Network (EPN)

The Environmental Protection Network is a 501(c)(3) non-profit that works to build the capacity of environmental agencies and the communities they serve to truly address the most urgent health and environmental crises.

With a small staff and over 650 EPA alumni across the country, EPN has:



Responded to over 1,400
technical assistance
requests

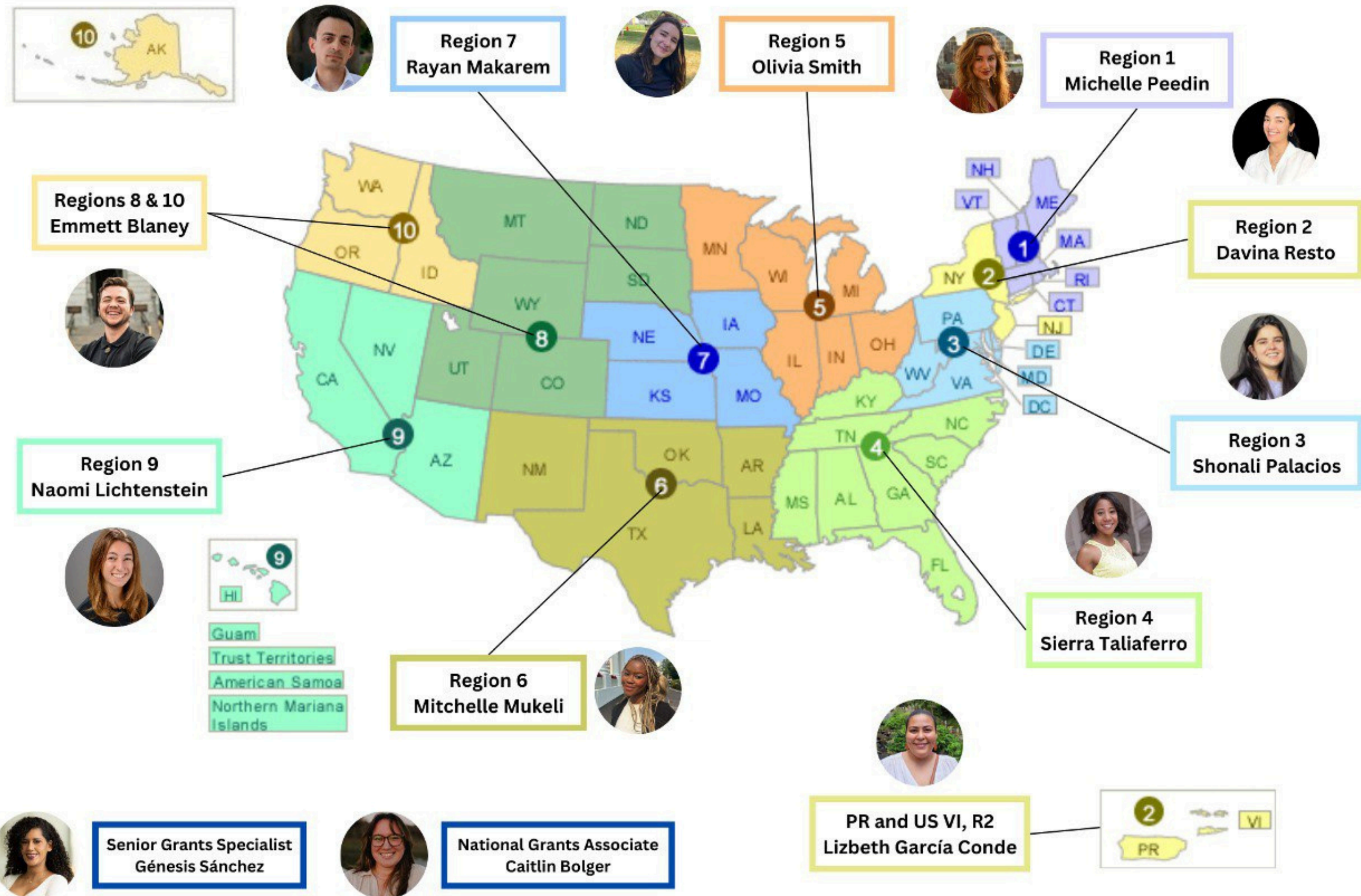


Assisted hundreds of
organizations applying for
federal grants



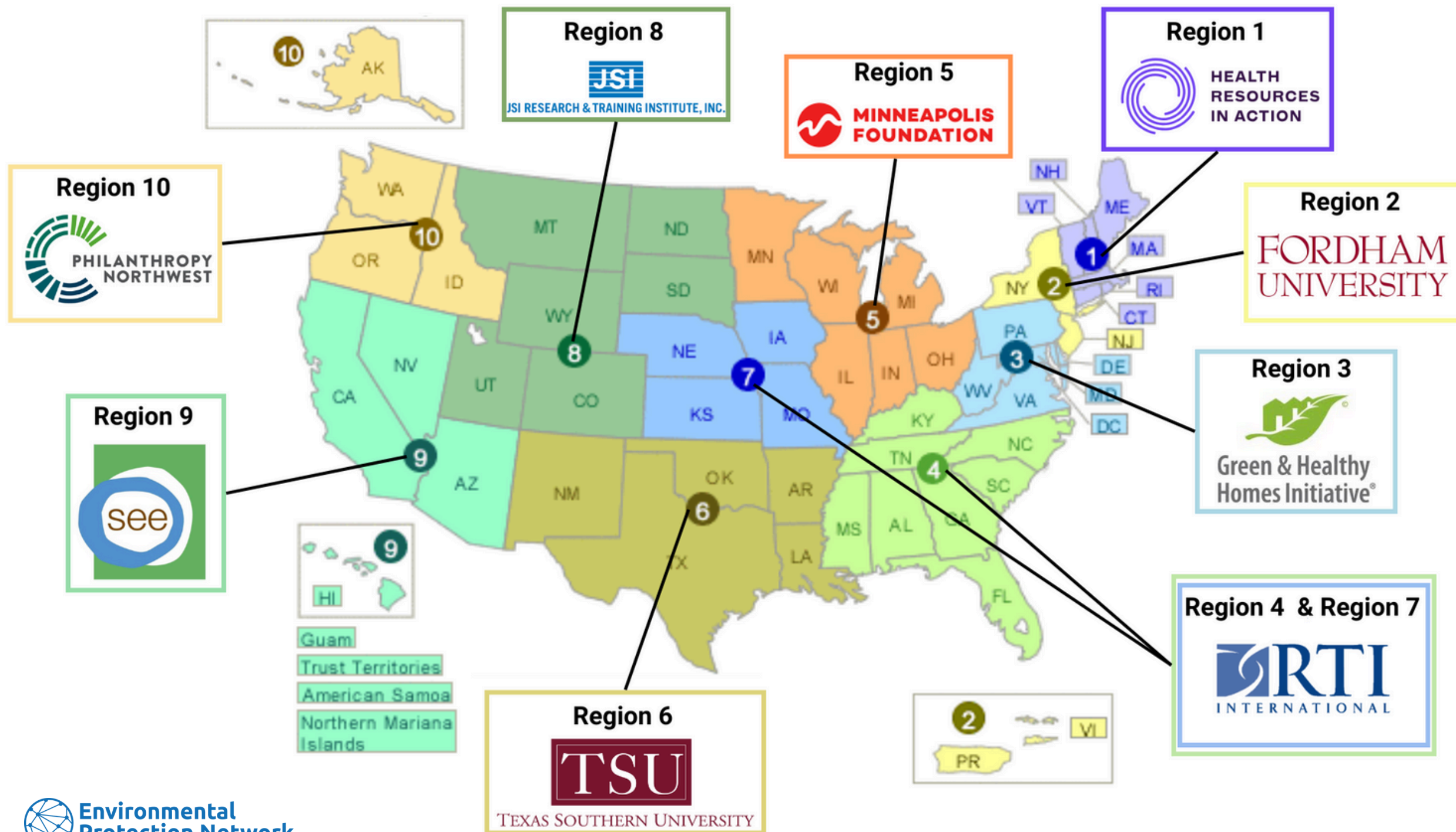
Helped communities
access over \$530
million in federal funds

EPN's Pro Bono Capacity-Building Technical Assistance Team



THRIVING COMMUNITIES GRANTMAKERS PROGRAM

REGIONAL GRANTMAKERS



NATIONAL GRANTMAKERS

Regions 1-3



Regions 4-7



Regions 8-10



PARTNERING UP



1 BUILD CAPACITY

Empower nonprofits to apply for funding by simplifying the complex process of grant writing

2 FUNDING

Provide communities and nonprofit organizations of all sizes the chance to secure funding faster and more efficiently than ever before

3 ACCESSIBILITY

Use AI with a realistic view of its strengths and weaknesses in support of communities and organizations seeking funding

4 ADVANCE EJ/CJ

Serve as a catalyst for positive transformation within communities across the country



AI TOOLS FOR APPLICANTS TO THE THRIVING COMMUNITIES GRANTMAKERS PROGRAM



Organizational Overview Generator

It collects information about the organization's mission statement, organization description, achievements, connection to underserved communities, programmatic capabilities, etc



Grantmakers Proposal Idea Generator

It compiles information about the program summary, environmental issues, project goals and outcomes, and the project timeline of an application



SPEED: Drafts key components of a grant application under 10 minutes



INFORMATION: Pulls information from the internet, uploaded documents, and user inputs



REFERENCES: citations are included



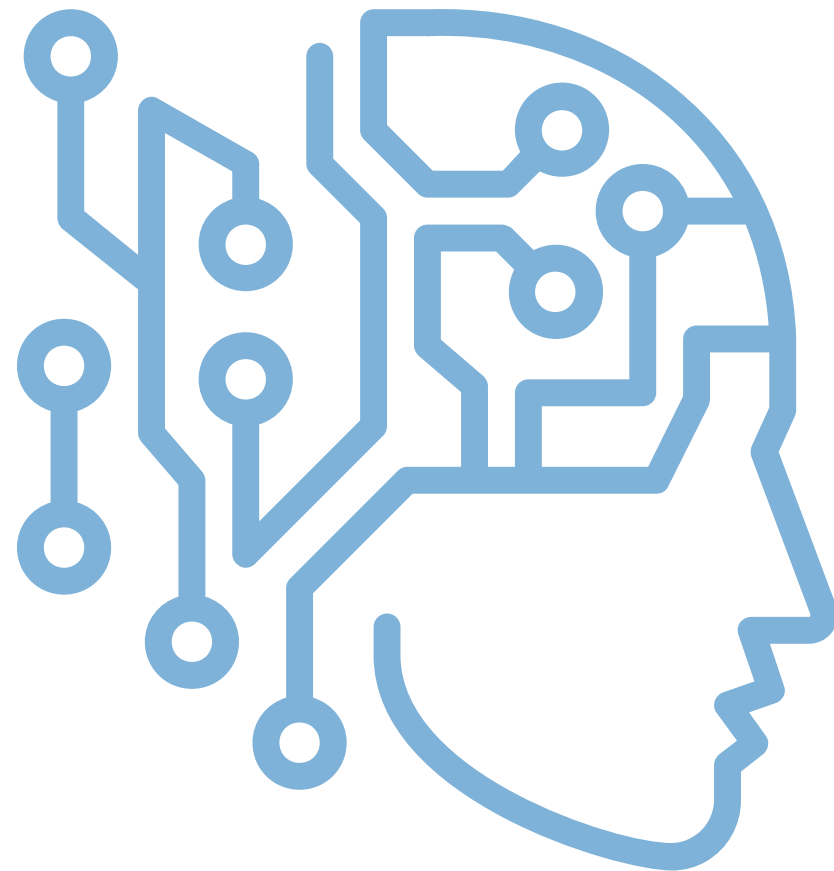
EDITABLE: You can edit or tailor a draft proposal to meet the requirements of a specific national or regional RFP

HOW DOES GRANTGENIE WORK?

Artificial Intelligence (AI) is technology that helps machines do tasks that normally require human intelligence. This includes things like understanding language, recognizing images, or making decisions. AI gets smarter over time by learning from data, which makes it useful for a wide range of tasks.

Large Language Models

GrantGenie uses a Large Language Model (LLM) to generate results. An LLM works by processing large amounts of text data to learn patterns in how language works. Here's how it works:



LEARNING FROM TEXT: It learns from huge amounts of data pulled from the internet, books, or journals.



UNDERSTANDING INPUT: It uses everything it has learned to understand the context and generate a response that fits.



GENERATING RESPONSES: It Generates responses based on patterns in the data it was trained on.

**1. HAVE YOU EVER
USED AI?**

**2. WHAT HAS BEEN
YOUR EXPERIENCE?**



AI LIMITATIONS



IT DOESN'T
UNDERSTAND THINGS
AS HUMANS DO



IT IS NOT A THOROUGH
RESEARCH TOOL

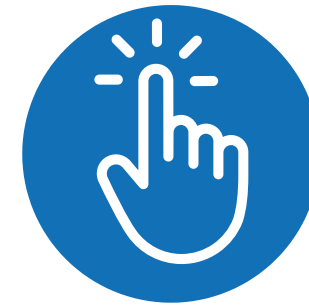


THE SPEED OF
CONTENT CREATION
CREATES NEW
OPPORTUNITIES TO
MAKE MISTAKES



IT NEEDS HUMAN
GUIDANCE

HOW TO USE GRANTGENIE?



1. Review GrantGenie's [Resource Hub](#)

Learn more about GrantGenie and the AI Tools for applicants for the Thriving Communities Grantmakers Program

2. Create an Account

Use your email address to create an account

3. Prepare in Advance

We strongly recommend you to read the [Grantmakers AI Tools Preparation Forms](#) in anticipation. Gather all the information needed to input high-quality data





4. Use the Grantmaker Tools

The AI tools are user-friendly. However, if you have questions on how to add information, review the [Step-by-Step Guide to using GrantGenie's Grantmakers AI Tools](#)

5. Edit and Customize

Edit and customize your draft to match the requirements of the Regional or National RFP you are seeking to apply to

HOW'S YOUR DATA HANDLED?

-  GrantGenie uses OpenAI's large language models: GPT-4 and GPT-4o
-  The information you enter into GrantGenie is sent to OpenAI's servers to be processed by the language model
-  OpenAI does not use your data to train or improve the model. It doesn't store or remember what you've entered
-  Your inputs are not connected to your identity and are not shared with other users

DATA PRIVACY AND CONFIDENTIALITY

Even though OpenAI follows strong security standards, complete confidentiality cannot be guaranteed. Your inputs are processed in real time and are not stored for future training. To protect your organization's privacy, avoid sharing highly sensitive or private information.



TIP: We suggest using public information or details you're comfortable sharing!

**IT'S TIME TO
DEMOSTRARE HOW
TO USE THE
GRANTMAKERS AI
TOOLS!**



NEED ASSISTANCE?



GRANTGENIE [Website](#)

Make sure your check
[GrantGenie's Resource Hub](#) for
step-by-step guides, FAQs, and
more



CONTACT INFORMATION

If you have questions or would like to share your
feedback,
please contact us at
GrantmakersAI@environmentalprotectionnetwork.org



OFFICE HOURS

EPN will host Grantmakers AI Office
Hours every two weeks on Tuesday
from 2-3 pm ET.

To register, [please click here!](#)